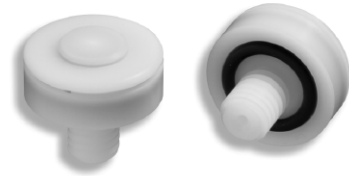




## LYN VALVE BK2

PA0202 (US Threads) PA0202M (Metric Threads)



### Instructions for use

#### AUTO EXPULSION & PUSH BUTTON FOR BELOW KNEE SUCTION SOCKET PROSTHESES

**NOTE:** Use pre-threaded housing (PA0222 or PA0222M) when installing BK2 Valve into thermoplastic materials. Drilling and tapping plastic materials may result in poor seal as plastics may stretch.

#### FEATURES

1. Installation AFTER prosthetic construction is complete.
2. Easy installation in sockets with wall thickness of 1/8" to 1/2" (Metric: 3.17mm-12.7mm) – no special tools required.
3. Releases air reliably at 1/2 PSI.
4. Push Button suction release
5. Indestructible low profile design - approximately 3/4" (Metric: 1.9mm) diameter
6. Disassembles easily for cleaning.
7. Available in US and Metric Thread

#### INSTALLATION

1. After prosthesis construction is complete, determine valve position and mark.
2. Using a 5/16" (Metric: 8.4mm-8.5mm) drill bit, drill square to the socket wall.
3. Tap using a 3/8"-16 tap for non-metric (M10x1.5 tap for metric shank).
4. Thread in valve and determine shank length required.
5. Sand shank while installed using a Trautman router/coarse cone.
6. Remove valve to buff shank.
7. Apply silicone sealant around base of shank and "o" ring. Screw valve into socket--firmly hand tighten. Clean valve.

#### DISASSEMBLY AND CLEANING

Insert a screwdriver into the groove and twist gently to separate valve.

1. Remove spring.
2. Grip grooved stem and lift out diaphragm and vent spool assembly.
3. Use compressed air to remove any particulate that may have collected on the inner valve surfaces.
4. Be sure hole in shank is clear of debris. Rinse with water if necessary.

#### REASSEMBLY

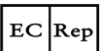
1. After cleaning, insert vent spool assembly into pocket.
2. Replace diaphragm with plastic side up.
3. Center spring and snap on Push Button cap



**Engineered Silicone Products, LLC**  
We're thinking on a higher level.

75 Mill Street, Suite #2  
Newton NJ, 07860  
ph. 888-932-7377 / 973-300-5120  
fax 973-300-5125

[www.wearesp.com](http://www.wearesp.com)



Medidas  
Zaagmolen 40  
3962 GB Wijk bij Duurstede  
Netherlands  
[medidas@medidas.nl](mailto:medidas@medidas.nl)